

# MONTHLY MEMBERSHIP PROGRESS REPORT

LOCATION PRINCE EDWARD ISLAND

District N 1

Results as of: 3/31/2023

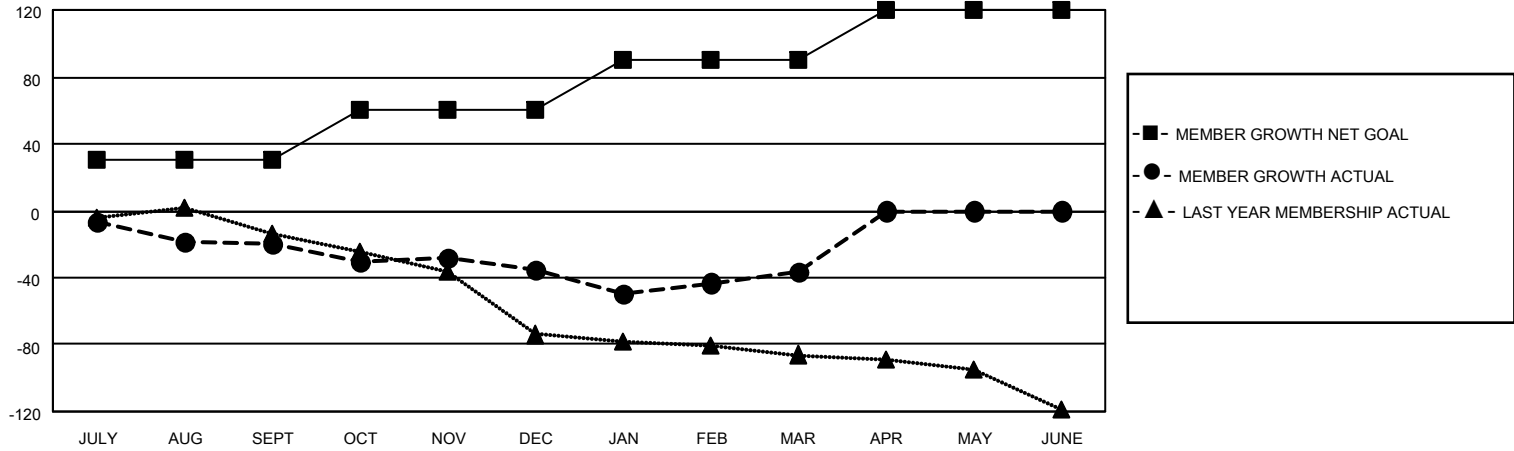
Clubs			
RESULTS FOR 2022-2023			
QUARTER	NEW CLUB GOAL	NEW CLUBS	DROPPED CLUBS
JULY/AUG/SEPT	0	0	1
OCT/NOV/DEC	0	0	0
JAN/FEB/MAR	0	0	0
APR/MAY/JUNE	1	0	0

Members			
RESULTS FOR 2022-2023			
QUARTER	MEMBER GROWTH NET GOAL	MEMBER GROWTH ACTUAL	DROPPED MEMBERS ACTUAL (including transfers)
JULY/AUG/SEPT	30	11	27
OCT/NOV/DEC	30	28	43
JAN/FEB/MAR	30	57	53
APR/MAY/JUNE	30	0	0

**GOALS AND ACTUAL NEW CLUBS CUMULATIVE**



**GOALS AND ACTUAL MEMBERS CUMULATIVE**



<b>DROPPED CLUBS: 1</b>	
<b>DROPPED MEMBERS</b>	
DECEASED	22
CLUB CANCELLED	0
OTHER	101
<b>TOTAL</b>	<b>123</b>

33 CLUBS OF 78 ADDED 1 OR MORE NEW MEMBERS

[CLICK HERE FOR CUMULATIVE MEMBERSHIP DATA](#)

<u>GENDER DISTRIBUTION</u>	
MALE	1,116 (71.45%)
FEMALE	445 (28.49%)
NON BINARY	0 (0.00%)
PREFER NOT TO ANSWER	1 (0.06%)
<b>TOTAL FAMILY UNIT MEMBERS</b>	<b>271</b>
<b>FAMILY MEMBERS PAYING HALF DUES</b>	<b>138</b>